

Dobrado

revisão Marcelo Jardim

revisão Marcelo Jardim

Allegro (tempo de marcha) ♩ = 120

1 *f*

7 *f*

13 *p* *f* *tr*

21 *p* *f* *tr*

29 *tr*

37 *tr*

43 *tr* *p* *mf*

51

59 *mf*

63

66 *f*

© Joaquim Antônio Naegle

73 *al Coda* 1 2

81 3 *tr* *f* 3 *tr* *f* *p*

93

100

107 109 *f*

113

119 1 2

125 2 127 *tr* *f* *mf* *f* *mf*

131 *tr* *mf* *f* *mf*

139

147 3 *f*

155



162



169

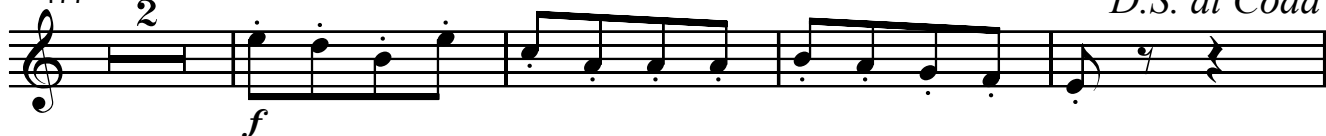
171

2



177

2

D.S. al Coda

0

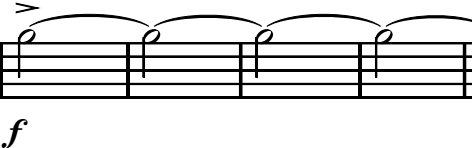
2

Fine

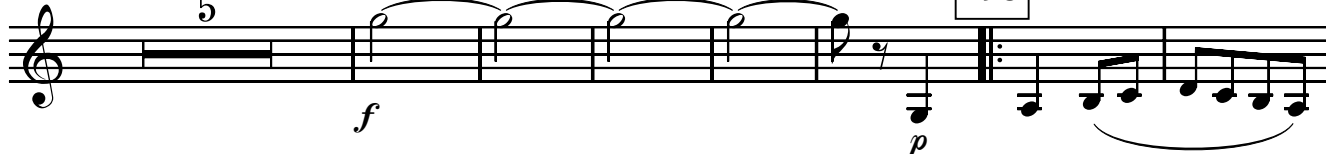
188

(Trio)

5

f

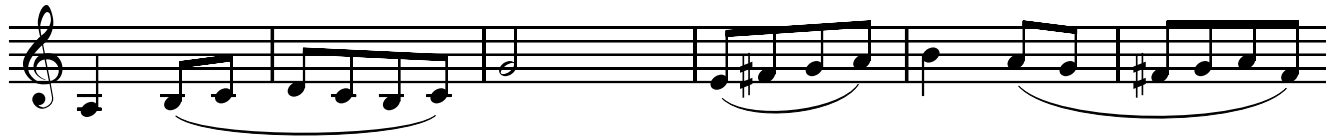
198

p

200



206



212

214

f

219



226

1

2

D.C. al Fine